



## **Title: Sharp Touch TV – Selecting the Correct Input / Component Useage**

**Created By: Sara Smith**

**Date: 1/23/2019 revised 1/23/2020**

---

### **Choosing the correct input**

**HDMI 1 – Microsoft Wireless Display Adapter**

**HDMI 2 – Touch TV PC**

**Use HDMI 1** to use your own laptop to display to the TV

**Use HDMI 2** to use the PC already connected to the TV. You can use your Windows credentials to log in.

At the bottom left corner of the TV there is a **Touch Menu** button to display input options. Tap the corresponding input.



### **Accessing and using the TV Computer (HDMI 2)**

No laptop needed, you can select **HDMI 2** and use the TV like its own computer. You can log in with your Windows credentials.

If **HDMI 2** is selected but nothing comes up on the screen, tap the power button on the small computer mounted to the back of the TV Stand.

### **Connecting your laptop to the TV (HDMI 1):**

This can only be done on a **Windows 10 Operating System**

See following screenshots for visual reference

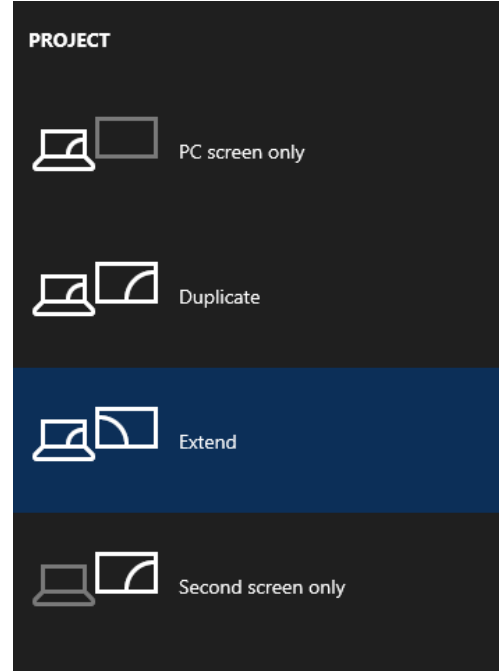
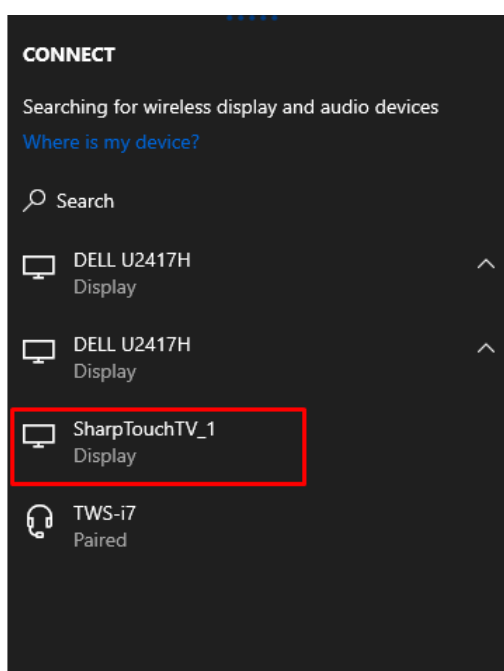
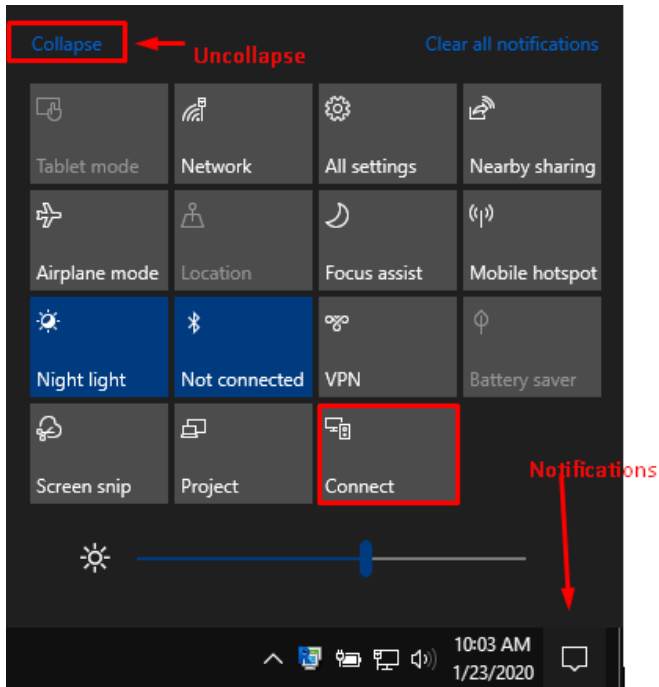
1. Click on notifications icon
2. Click "Expand" (if it does not say "Collapse")
3. Click "Connect" tile

Select SharpTouchTV\_1.

To toggle how you want your laptop to pair up with the TV display, Click the "Project" Tile, next to the "Connect" tile.

**Duplicate:** Mirrors your desktop screen to the TV

**Extend:** Makes the TV act like a second monitor where you can drag programs or presentations



If these instructions do not work, please contact the IT Department for further assistance.

***Do not move or unplug any cables.***